

Your place to celebrate

Your Cambridge Town Hall Wedding Guide





A Waikato wedding venue with a history of romance

Congratulations, and thank you for considering Cambridge Town Hall as a venue for your upcoming wedding. Built in 1909, the iconic pillars, Edwardian architecture and historical charm will lend an air of dignified romance to your big day and serve as the perfect backdrop for those once-in-a-lifetime photographs, no matter what the weather does.

As one of the most flexible venues in the Waikato, we offer many different options so you can create an event that suits your unique style and budget perfectly. A Town Hall wedding is a long-established classic tradition and whether you're planning a small, intimate ceremony or a huge reception, we'll help you create the day of your dreams.

"We loved getting married at the Cambridge Town Hall, a truly unique venue with plenty of flexibility for us to add our own flair to the event!"

Loren Engelsman



Ceremony

With its Edwardian features and hardwood floor, the Main Hall provides the perfect space to walk down the aisle. Couples can select their own celebrant and may choose to marry on the stage in full view of family and friends.

Smaller, more intimate ceremonies and elopements can be held in the Edwardian Room, with couples saying their vows at the raised dais before enjoying celebratory drinks at the bar.

Reception

Whether you choose to get married at the Town Hall, or hold your ceremony elsewhere, you can still host your reception here. With a maximum capacity of 150 people, and affordable self-catering or catered packages, you won't have to leave anyone off your guest list.

Catering

We're one of very few large venues that allow events to be self-catered, meaning you can significantly reduce the cost of your wedding by providing your own food, or selecting a caterer that best fits your budget and needs. Kitchen facilities include two standard fridges, two standard ovens, a turbo oven, microwave, dishwasher and plenty of benchtop space. Cambridge boasts an impressive range of caterers to suit all tastes and budgets and we can put you in touch with people who can help.





Band/DJ

Every great celebration needs good music and your band or DJ can set up on the impressive stage in the Main Hall. As a venue designed for concerts and performances, the Hall's acoustics are excellent and the polished wooden floor is perfect for your first dance.

Photography

Iconic architectural features and an idyllic setting in the heart of pretty Cambridge provide the perfect backdrop for your forever photos. The Town Hall's charming sense of history and elegance will give your wedding photographer plenty of inspiration to set up the perfect shots, rain or shine.

Wedding Packages

Every wedding is special and we'd love to be part of yours. To help you get started, we've covered all the basics in our wedding packages, and you can add your own personal touches to make your big day as unique as your own love story.

Ever After Package

For those dreaming of a big, beautiful wedding

When you want to go large and can't bear to cut anyone from the guest list, we've got the space you need to gather all your favourite people and celebrate.

- 12 hour hire of entire Town Hall, including Main Hall, Victorian and Edwardian Rooms, stage, kitchen facilities, bar and cloakroom
- Trestle, round tables and bar leaners are available plus chairs for up to 150 seated guests
- Set up and pack down support
- On-the-day support

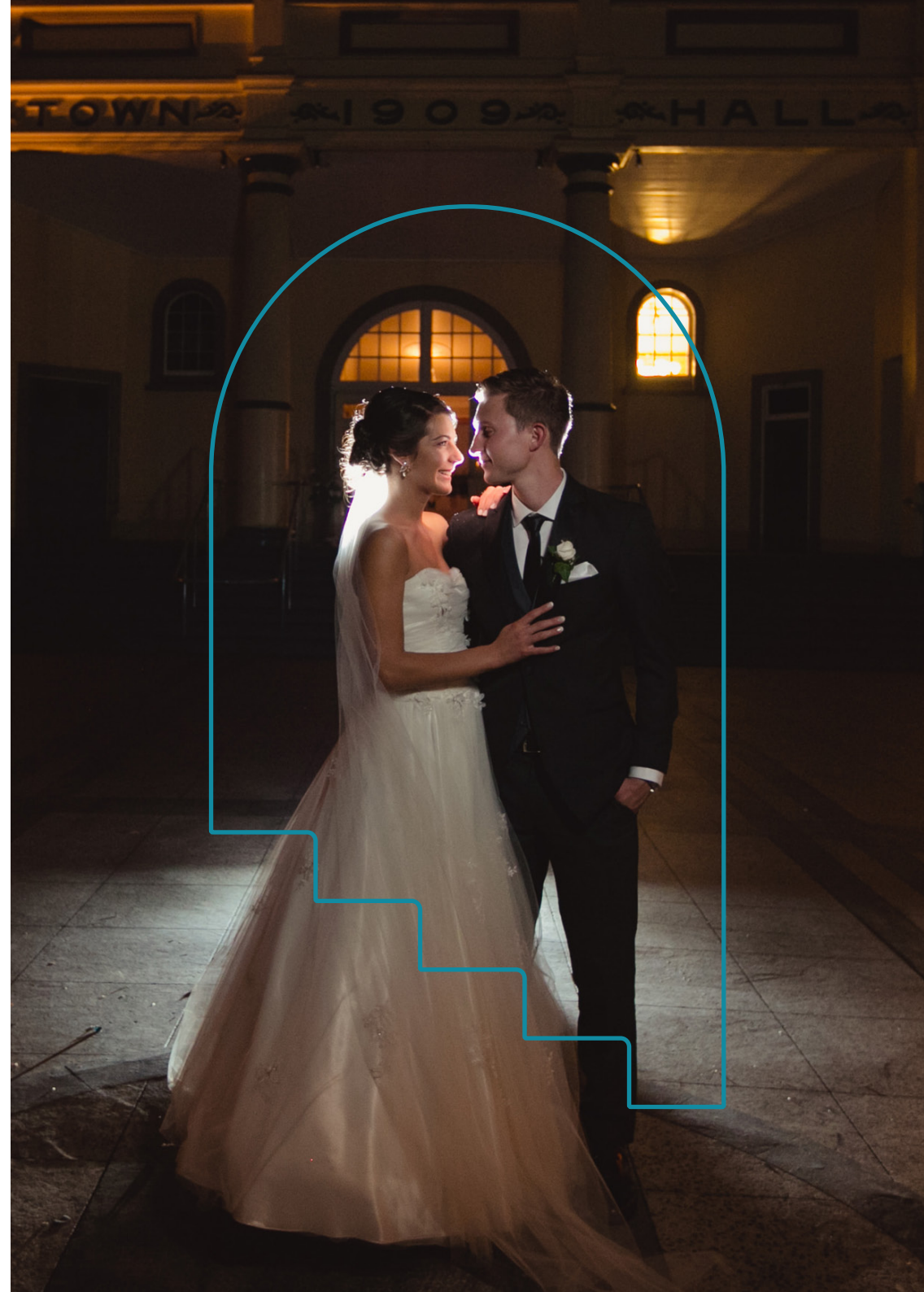
MONDAY - THURSDAY*

\$1,050 Per day

FRIDAY - SUNDAY*

\$1,200 Per day

*Excluding public holidays





Take My Hand Package

For soulmates making it official

If you're looking for an understated, low-key wedding, elopement or renewal of vows, Cambridge Town Hall offers the Edwardian Room for more intimate ceremonies and small receptions.

- Up to 50 guests standing
- 12 hour hire of Edwardian Room, kitchen and bar
- Simple event lighting package
- Tables & chairs for up to 24 guests'
- 4hr Setup the night before (5pm-9pm)

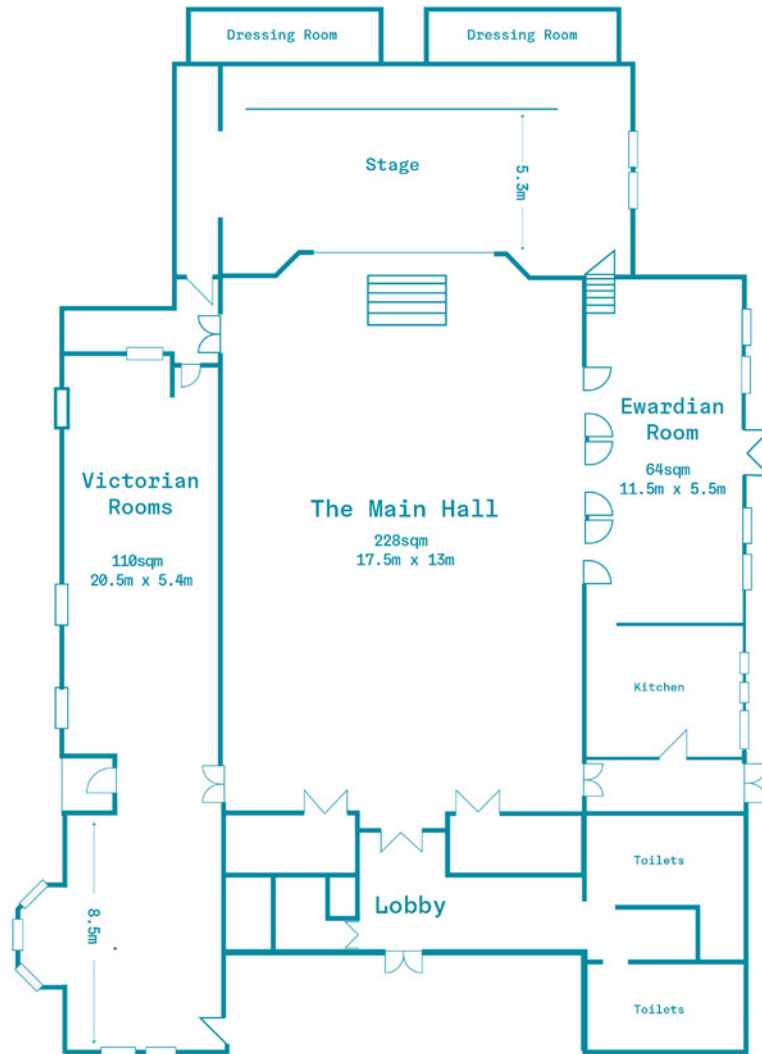
MONDAY - THURSDAY only

\$600 Per Day





The spaces



Main Hall

ROOM SIZE:

228sqm (17.5m x 13m)

CAPACITY:

Standing	314
Loose Seating	280
Table and Chairs	150

Victorian Room

ROOM SIZE:

110sqm (20.5mx 5.4m)

CAPACITY:

Standing	100
Loose Seating	80
Table and Chairs	44

Edwardian Room

ROOM SIZE:

64sqm (11.5m x 5.5m)

CAPACITY:

Standing	50
Loose Seating	40
Table and Chairs	24



Booking your Town Hall wedding

Let's work together to create your unique, all-weather wedding day that reflects exactly what you and your love are all about.

Please contact our us by email at: info@cambridgetownhall.co.nz

